


Yarn Dye Basics III

by  THE BUGGY BARN



68 1/2" x 82"

 **Henry Glass & Co.**

49 West 37th Street
New York, NY 10018
tel: 212-686-5194 fax: 212-532-3525
New York: 800-294-9495
www.henryglassfabrics.com

Yarn Dye Basics III

68 1/2" x 82"

FABRIC REQUIREMENTS FOR THE QUILT

Fat Quarters of 2 dark blue fabrics

Fat Quarters of 2 dark red fabrics

Fat Quarters of 4 assorted dark fabrics

Fat Quarters of 5 pumpkin fabrics

Fat Quarters of 4 medium fabrics

Fat Quarters of 3 cream fabrics

1483Y-81 Red Plaid

5/8 yd (sashing)

1483Y-73 Blue Plaid

3/8 yd (sashing)

1483Y-61 Green Plaid

3/8 yd (sashing)

1707Y-44 Pumpkin

1/4 yd posts

7025Y-34 Pumpkin

1/4 yd cornerstones

1017Y-41 Cream

1/2 yd inner border

7080Y-99 Black

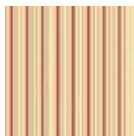
1 1/4 yd outer border

Backing

5 yd

Binding

5/8 yd



7197Y-2



7197Y-1



7081Y-99



7081Y-66



7080Y-99



7025Y-88



7025Y-66



7025Y-55



7025Y-34



1707Y-44



1707Y-39



1558Y-44



1558Y-43



1558Y-33



1483Y-81



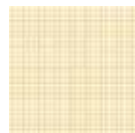
1483Y-73



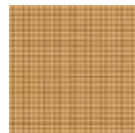
1483Y-61



1483Y-54



1482Y-44



1482Y-38



1482Y-33



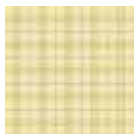
1017Y-88



1017Y-69



1017Y-49



1017Y-41



1017Y-34



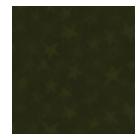
1017Y-39



1910Y-88



1910Y-77



1910Y-66



1910Y-55



1910Y-44



1910Y-34



1910Y-33

Yarn Dye Basics III

By the Buggy Barn for Henry Glass & Co.

Quilt Designed by Sue Falkowski

68 1/2" x 82"

FABRIC REQUIREMENTS FOR THE QUILT

Fat Quarters of 2 dark blue fabrics

Fat Quarters of 2 dark red fabrics

Fat Quarters of 4 assorted dark fabrics

Fat Quarters of 5 pumpkin fabrics

Fat Quarters of 4 medium fabrics

Fat Quarters of 3 cream fabrics

1483Y-81 Red Plaid	5/8 yd (sashing)
1483Y-73 Blue Plaid	3/8 yd (sashing)
1483Y-61 Green Plaid	3/8 yd (sashing)
1707Y-44 Pumpkin	1/4 yd posts
7025Y-34 Pumpkin	1/4 yd cornerstones
1017Y-41 Cream	1/2 yd inner border
7080Y-99 Black	1 1/4 yd outer border
Backing	5 yd
Binding	5/8 yd

FABRIC IN THE COLLECTION

7197Y-2/1

7081Y-99/66

7080Y-99

7025Y-88/66/55/34

1707Y-44/39

1558Y-44/43/33

1483Y-81/73/61/54

1482Y-44/38/33

1017Y-88/69/49/41/34/39

1910Y-88/71/66/55/44/34/33

Please read through all instructions before beginning. Seam allowance = 1/4".

wof = width of fabric. FQ = fat quarter.

Tip: before cutting borders, measure your quilt top through the middle (side to side and top to bottom) in case you need to adjust the size a bit.

CUTTING REQUIREMENTS

From dark blue FQ (stars)

- (10) 3 1/2" squares
- (80) 2" squares

From dark red FQ (stars)

- (10) 3 1/2" squares
- (80) 2" squares

From assorted dark FQ

- (20) 2" x 17" strips for four patch
- (160) 2" squares

From assorted medium FQ

- (160) 2" x 3 1/2" rectangles

From pumpkin FQ

- (160) 5" x 2" rectangles

From cream FQ

- (20) 2" x 17" strips for four patch
- (80) 2" squares

Red Plaid 1483Y-81 for sashing

- (9) 2" x wof strips, subcut (25) 2" x 12 1/2" rectangles

Blue Plaid 1483Y-73 sashing

- (4) 2" x wof strips, subcut (12) 2" x 12 1/2" rectangles

Green Plaid 1483Y-61 sashing

- (4) 2" x wof strips, subcut (12) 2" x 12 1/2" rectangles

Pumpkin 1707Y-44 for posts

- (2) 2" x wof strips subcut into (30) 2" squares

Pumpkin 7025Y-34 border corner squares

- (4) 5 1/2" squares
- (4) 2" squares

Cream 1017Y-41 inner border

- (7) 2" x wof strips pieced into:
 - (2) 2" x 56" strips
 - (2) 2" x 69 1/2" strips

Black 7080Y-99 Outer border

- (7) 5 1/2" x wof strips, pieced into:
 - (2) 5 1/2" x 59" strips
 - (2) 5 1/2" x 72 1/2" strips

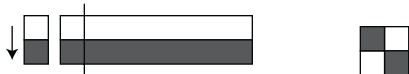
Binding

- (8) 2 1/2" x wof strips, pieced end to end

ASSEMBLE FOUR PATCH UNITS

Sew strip sets for four patch units (block corners):

Pair 20 assorted dark 2" x 17" strips with 20 assorted cream 2" x 17" strips. Sew into 20 strip sets. From these, cut (160) 2" x 3 1/2" sections. Sew these together to make (80) four patch units. You will use (4) four patch units for each block.



BLOCK ASSEMBLY Make 20-12" (finished) blocks

We made 10 blocks with dark blue stars and 10 with dark red stars.

For each block:

You will need:

- (1) 3 1/2 square dark blue (red) fabric for star center.
- (8) 2" squares dark blue (red) fabric for star points
- (8) 2" x 5" pumpkin rectangles
- (8) 2" squares assorted dark fabric
- (8) 2" x 3 1/2" assorted medium fabric
- (4) 2" squares cream fabric

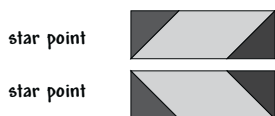
Draw a line from corner to corner on the wrong side of (8) star point 2" squares and (8) assorted dark 2" squares. Place one star point square on the end of a 2" x 5" pumpkin rectangle (right sides together). Sew on the line. Press the seam open, it will be easier to piece to the adjacent unit. Trim corner.



Repeat on the opposite end of the rectangle with a dark 2" square. Note the square is sewn with the seam parallel to the first square. Make four units with the star point angled right and four with the star point square angled left. Please see the diagram.



Sew the rectangle units into (4) pairs as shown.

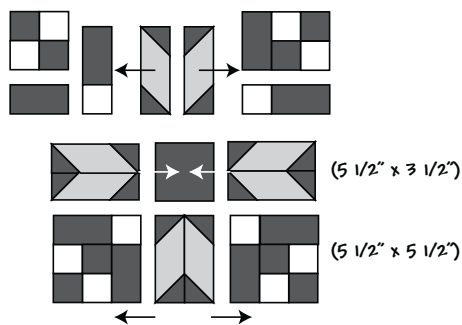


Sew a 2" x 3 1/2" medium rectangle to one side of a four patch unit as shown: (note placement of the dark squares in the four patch.)

Sew a cream 2" square to a 2" x 3 1/2" medium rectangle. Add this to the four patch unit.

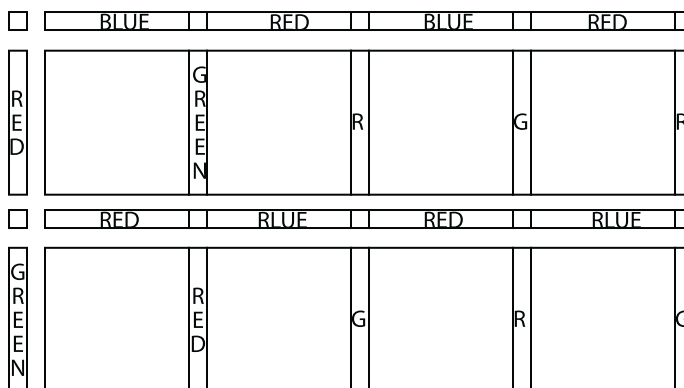


Assemble the block as shown. Make 20 blocks.



SASHING

Sew 2" x 12 1/2" sashing strips to the blocks. Begin row one with a red plaid strip and alternate with green plaid strips. Begin row two with a green plaid strip and alternate with red plaid strips. Rows (3) and (5) begin with a red plaid strip and rows (2) and (4) begin with a green plaid strip. Press toward the sashing strips.



The sashing strips between the blocks rows alternate (5) 2" squares pumpkin posts with (2) red plaid and (2) blue plaid 2" x 12-1/2" strips. Press posts toward the sashing strips. Make (6) rows. See diagram.

Layout the quilt in five rows alternating with the sashing rows. The top left pumpkin post is followed by a blue sashing strip. For the next sashing row, turn the sashing strip so that a red plaid strip follows the first pumpkin post. Sew the rows together alternating the sashing strips.

BORDERS

Sew 2" x 69 1/2" strips inner border to sides of the quilt. Press toward the borders. Sew a 2" square pumpkin to each end of the remaining (2) 2" x 56" strips. Press toward the borders. Add to the quilt top and bottom. Repeat this process with the 5 1/2" outer border strips and 5-1/2" pumpkin corner squares. Layer, baste, quilt and bind. Enjoy!