

TIMELESS
TREASURES

Blue Moon featuring Tonga Batiks

quilt by *Karen Montgomery*



Photo: D. James Dee

Finished Quilt: 81" x 96"

Materials

1/2 yard each of twelve assorted Navy

Tonga Batiks for blocks and binding:

Tonga-B3130 Navy

Tonga-B3662 Navy

Tonga-B3664 Navy

Tonga-B3895 Navy

Tonga-B4807 Navy

Tonga-B4815 Navy

Tonga-B4831 Navy

Tonga-B4848 Navy

Tonga-B6350 Navy

Tonga-B6352 Navy

Tonga-B6353 Navy

Tonga-B6351 Navy

3¹/₄ yards Hue-C6077 White for sashing

2¹/₂ yards XTonga-B2336 Navy or 5³/₄

yards regular-width Tonga batik of your choice for backing

Batting

Thread

Cutting Instructions

From each piece of Navy batik cut:

- Four strips 3¹/₂" by the width of the fabric (WOF).
 - Sub-cut one of these strips from *each* fabric in half on the fold to yield two pieces 3¹/₂" by approximately 21".
 - From one set of these strips (one half-strip each of twelve batiks), cut thirty-four 3¹/₂" squares.
- One strip 2¹/₂" x WOF. Cross cut these strips into two pieces each measuring 2¹/₂" x 20".

From Hue-C6077 White, cut:

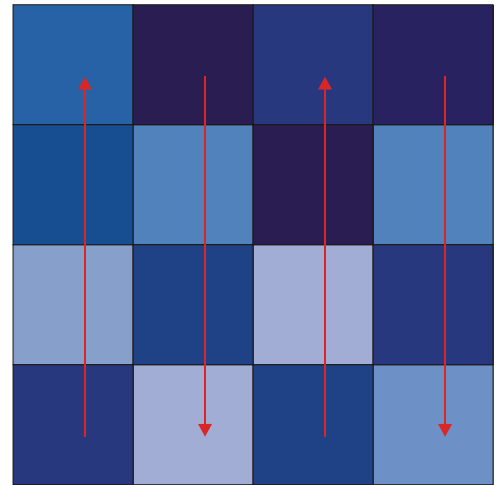
- Six strips 6¹/₂" x WOF. From each of these strips cut three pieces measuring 6¹/₂" x 12¹/₂" for a total of eighteen pieces. (Unit F)
- One strip 6¹/₂" x WOF. From this strip cross cut eight pieces measuring 3¹/₂" x 6¹/₂". (Unit G)
- Nineteen strips 3¹/₂" x WOF. From these strips cut forty-nine pieces measuring 3¹/₂" x 12¹/₂" (Unit D) and twenty-two 3¹/₂" squares (Unit E).

Instructions

1. Working with the thirty-six 3¹/₂" x WOF Navy strips, randomly assemble nine strip sets of four pieces each. Press all seams in one direction in each strip set.
2. Cross cut each four-strip set into eleven 3¹/₂" units. You will have ninety-nine four-strip segments measuring 3¹/₂" x 12¹/₂". You will need eighty for Block A.

Reserve eighteen for sashing unit B.

3. Randomly assemble eighty of the four-strip segments into twenty 16-Patch blocks with four segments in each for Block A. Alternate the direction of the seams in each row. Each block contains sixteen individual squares of the twelve available fabrics. There will be fabric repeats in each block. Press the seams between segments to one side. Your finished A blocks will measure 12¹/₂" square including seam allowances.



16-Patch Block

4. Stitch the remaining twelve 3¹/₂" x approximately 20" strips together in six random pairs. Cross cut these strip sets into thirty 3¹/₂" two-strip segments for sashing unit C and 4-patch corners.

5. Refer to the Layout Diagram and arrange the completed blocks, strip-set segments and Navy squares with the white sashing and border pieces.

NOTE: When placing the 3¹/₂" white squares (E), arrange the stripes on the fabric so that they run perpendicular to the nearest edge of the quilt, in the same direction as the outer border.

6. Stitch the pieces together row-by-row pressing the seams toward the Navy fabrics.

7. Stitch the rows together, matching the seams, to assemble the quilt top. Press.

8. Layer the completed quilt top with batting and backing and baste the layers together. Quilt as desired. Trim the batting and backing even with the quilt top.

9. Trim the ends of the 2¹/₂" by 20" binding strips on a 45° angle. Stitch the strips together end-to-end to create one long strip. Press the seams open and press the strip in half lengthwise with the right side showing. Pin the binding to the front edge of the quilt with the raw edges even and mitering the corners. Stitch the binding in place by machine. Fold the binding over the raw edge to the back of the quilt and stitch in place by hand.

©2009 Karen Montgomery

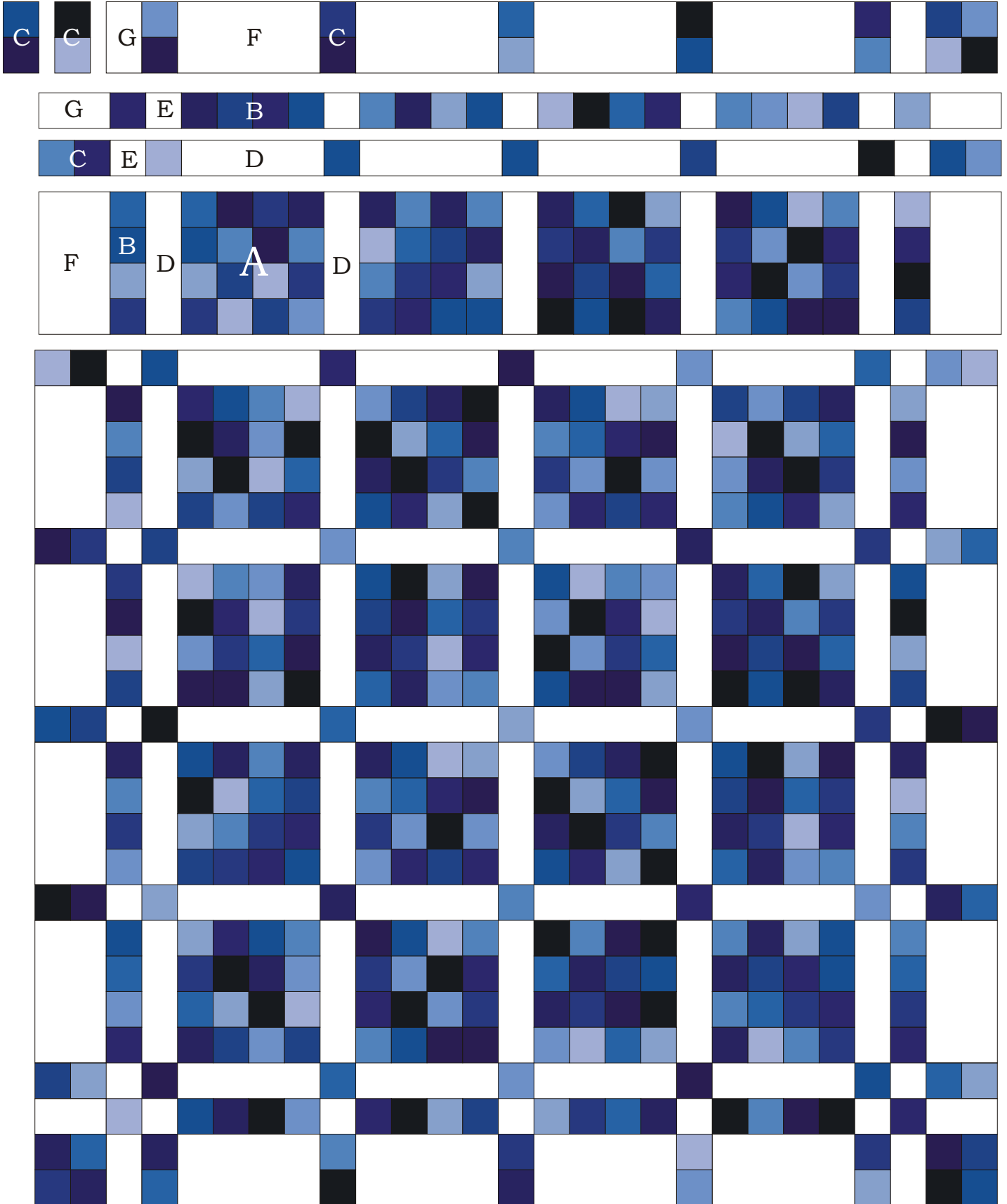
www.thequiltcompany.com

Permission is granted to shop owners and teachers to make copies for promotional or educational purposes only.

This pattern may not be reproduced for commercial purposes (i.e. may not be sold).

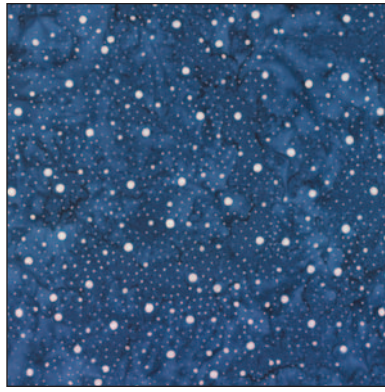
This pattern may not be reproduced for ANY PURPOSE after October 31, 2010.

LAYOUT DIAGRAM

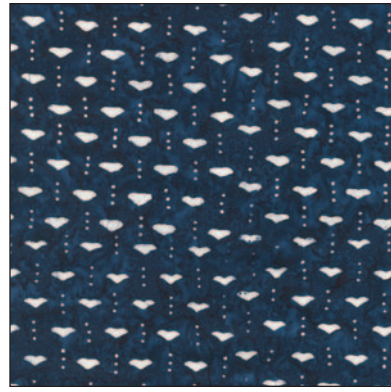




TONGA-B3130 NAVY



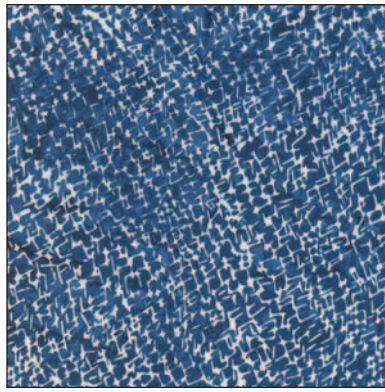
TONGA-B3662 NAVY



TONGA-B3664 NAVY



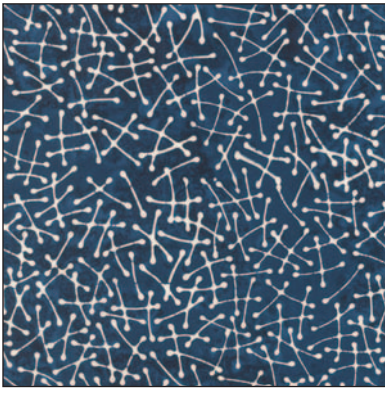
TONGA-B3895 NAVY



TONGA-B4807 NAVY



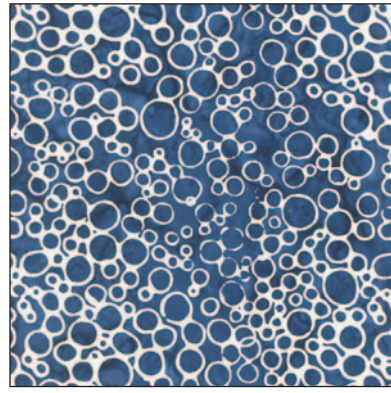
TONGA-B4815 NAVY



TONGA-B4831 NAVY



TONGA-B4848 NAVY



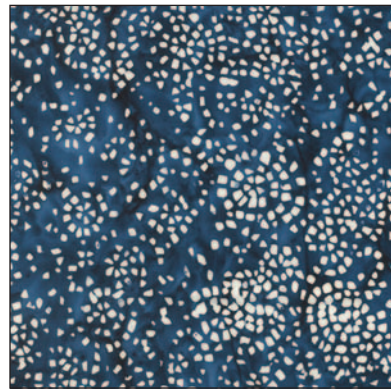
TONGA-B6350 NAVY



TONGA-B6352 NAVY



TONGA-B6351 NAVY



TONGA-B6353 NAVY

ALL FABRICS SHOWN 25%
OF ACTUAL SIZE.